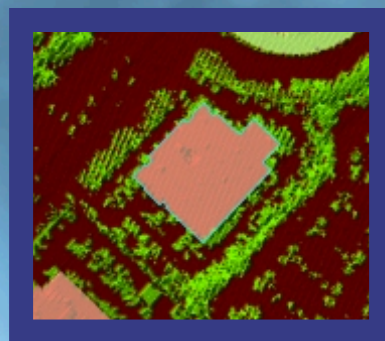
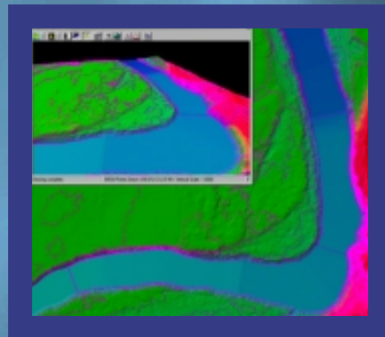
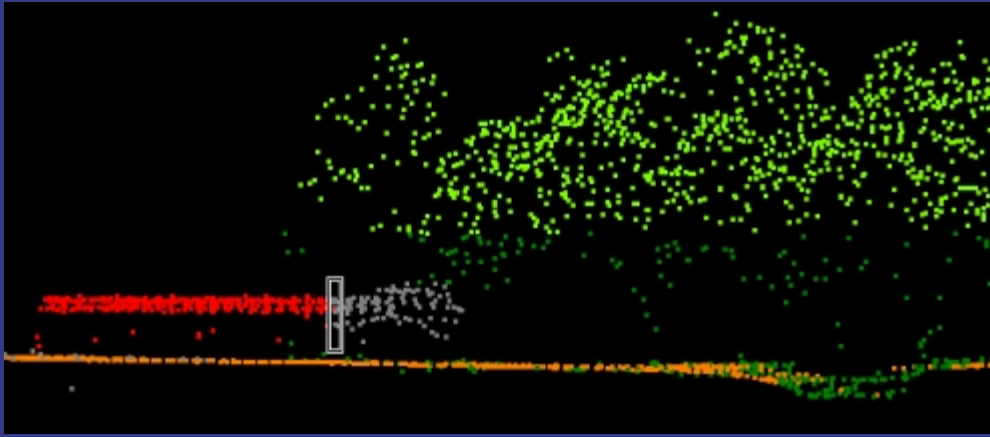


Classify

**LP360 module providing classification
and conflation tools for LiDAR point clouds**



- **Compatible with LP360 for ArcGIS®**
- **Compatible with LP360 Standalone**
- **Basic Filtering and Hand Edit Tools**
- **Breakline Creation Tools (LP360 for ArcGIS)**



Classify

Classify* for LP360 provides an easy to operate tool suite for classifying/editing LiDAR point clouds. LiDAR points can be driven to any LAS predefined or reserved (customizable) classification. Automated basic filters are available as are hand classification tools in orthographic and in cross-section windows. Classify can be used in combination with other data layers providing unique classification capabilities that leverage existing data in classification operations. Classify includes LPOjects allowing for the programming of batch algorithms as well as customized filtering applications.

- Module for LP360 (ArcGIS and LP360 Standalone**)
- Hand classification tools
- Basic non-algorithmic automated classification filters/utilities
- Classify by GIS data layers/features (including 3D polygons)
- Geometry conflation operations
- LiDAR Z value(s)/statistics conflation
- Heads-up breakline digitization tools with customizable operations**
- Programmable with LPOjects

* Requires an LP360 license

** Available features and operations will vary depending on environment

QCoherent Software
1880 Office Club Point,
Colorado Springs, CO 80920
719-386-6900

For an evaluation and additional
information visit us at
www.QCoherent.com

Trademarks provided under license from ESRI. ESRI, the ESRI globe logo, ArcGIS, ArcMap, and ArcView are trademarks, registered trademarks, or service marks of ESRI in the United States, the European Community, or certain other jurisdictions. Copyright 2009 QCoherent Software

