



LP360 for ArcGIS is an extension that provides the ability to create and manipulate LiDAR layers directly from LAS files without any time consuming importing or converting processes. LP360 products are not RAM sensitive and allow huge amounts of LiDAR to be loaded, merged, and managed in a single LiDAR data layer. LP360 for ArcGIS provides users with the custom dockable 3D and profile windows that are required when working with high-density LiDAR datasets. With many advanced LiDAR specific functions, LP360 for ArcGIS seamlessly leverages the power of GIS with LiDAR point clouds.



LP360 Standalone is QCoherent's standalone application for LiDAR. LP360 Standalone only requires a Windows® operating system with a minimal hardware configuration. LP360 Standalone handles gigantic LiDAR datasets and provides the orthogonal, profile, and 3D visualizations required by LiDAR professionals. Without additional CAD or GIS requirements LP360 Standalone provides operational flexibility when working with LiDAR.

One License - Multiple Environments: LiDAR Software with Operational Freedom

With LP360's unprecedented co-licensing, analysts can dynamically choose the LP360 environment (LP360 for ArcGIS and/or LP360 Standalone) best suited for specific tasks and/or available resources.

Bring LiDAR to life with QCoherent's LP360 for ArcGIS and LP360 Standalone. LP360 software makes working with LiDAR easy and brings standardized LAS data (ASCII converter included) to the desktop. LP360 software is designed to handle vast quantities of data and is not RAM sensitive, just load-and-go no matter how large the dataset.

LP360 LiDAR software provides unbelievably fast dynamic hill-shading (tinning) and contouring, reducing the need to create, manage and store repetitive derivative data. The rich visualizations are intuitive to operate and leverage information available in the LAS format. With LP360, LiDAR can be quickly mined for information via custom classification, point-return, intensity, elevation, and flightline visualizations.

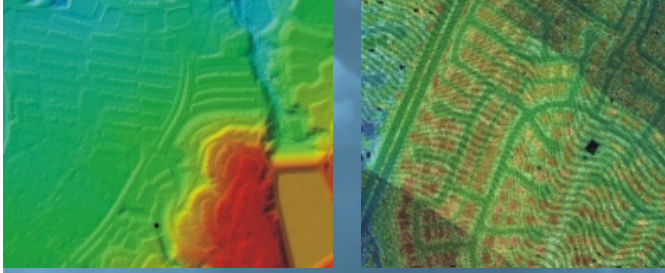
A costly component of a LiDAR project can be the creation of static derivative products such as DEMs and contours. LP360 software provides exporting tools to create derivatives as needed. The ability to quickly create derivatives from LiDAR based on a geographic area of interest with project specific requirements will not only reduce project cost but provide more reliable data.



- Seamlessly manage thousands of LiDAR files and terabytes of data
- On-the-fly tinning and contouring
- Export wizard
- Specialized customizable LiDAR viewing controls
- 3D viewer
- Cross section/profile viewers
- ASCII point to LAS importer
- Compatible with LAS versions 1.0, 1.1, and 1.2
- LAS statistics/header information
- Tripod/ground-based LiDAR integration options
- LPOjects for creating custom programs and operations
- QA/QC tools
- Unprecedented operational flexibility: LP360 for ArcGIS and LP360 Standalone are co-licensed
- **C**lassify and **E**xtractor modules available

Learn More and Try LP360 Today
www.QCoherent.com





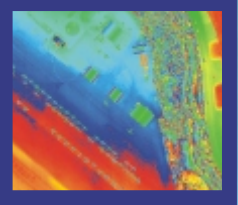
Designed to handle immense point clouds:
 LP360 for ArcGIS and LP360 Standalone will
 bring the benefits of LiDAR to your desktop.

QCoherent Software
 1880 Office Club Point
 Colorado Springs, CO 80920
 719-386-6900
www.QCoherent.com

Try LP360 today!
 A FREE evaluation is available
 at: www.QCoherent.com

LP360

LiDAR Software



Try LP360 today!
 A FREE evaluation is available at: www.QCoherent.com



- LiDAR Software
- Training
- Custom Programming
- Consulting



Trademarks provided under license from ESRI, ESRI, the ESRI globe logo, ArcGIS, ArcMap, and ArcView are trademarks, registered trademarks, or service marks of ESRI in the United States, the European Community, or certain other jurisdictions. Copyright 2009 QCoherent Software

- Load Terabytes of LiDAR
- Fast and Easy to Use
- Optimized Visualizations
- Exports Custom Derivatives
- Classify and Extractor Modules

